

CITY OF NAPA

PARK AND FACILITIES MASTER PLAN

JANUARY PUBLIC WORKSHOPS

SUMMARY MEMO

FEBRUARY 11, 2009

Prepared by:



MIG, Inc.
Berkeley, California
www.migcom.com

INTRODUCTION

The City of Napa is currently completing a Parks and Facilities Master Plan that will serve as a guide for the next 15 years of parks and recreation planning. The Community Resources Department hosted a series of community workshops to support the master planning process on January 22nd, 24th and 28th. Over 150 Napa residents of all ages signed in for the workshops while informal counts indicate that as many as 220 people attended to learn about the planning process and provide general and specific input about the current park system and ways to improve it.

Workshops were held in three different locations (Harvest Middle School, Senior Center and Las Flores Community Center) to provide residents throughout Napa with the opportunity to attend a workshop close to their home. A variety of outreach methods were used to get the word out about the workshop including electronic distribution of announcements through existing networks such as the Napa recreation programming participant list. Additionally, workshop announcements were posted at recreation facilities throughout town and a variety of business locations.

All meeting announcements and workshop materials were translated into Spanish for non-English speaking Napa residents wishing to participate in the workshops. Bilingual staff were at the workshops to provide translation assistance as needed.

City of Napa Community Resources Department staff attended each workshop to answer questions and listen to residents. The workshops were facilitated by Ryan Mottau and Paul Rosenbloom of MIG, Inc.

WORKSHOP PURPOSE AND OUTCOMES

The purpose of the community workshops was to:

- Inform and educate residents about the master planning process; and
- Solicit and generate general and specific resident input and ideas about the Napa parks and recreation system.

Upon arriving at the workshop, all attendees were asked to participate in a dot exercise to provide preliminary thoughts and ideas about the park and recreation planning process. City of Napa and MIG staff was positioned at

three large display boards to answer questions and describe the dot exercise process. The questions asked are listed below:

1. How do you use Napa Parks and Recreation Facilities?
2. How do you usually get to Napa Parks?
3. Where do you live and play? *Place a sticker next to where you live and the Napa park you visit most frequently*

Based on the input generated at the workshop display boards, walking and hiking is the most popular current use of Napa parks and recreation facilities, followed by playing competitive sports. Strong attendance by the youth skateboarding community led towards the ranking of skateboarding as a very popular activity as well. The majority of workshop attendees report that they usually drive to Napa parks, but many bike, walk and skate as well. Only one person reported that they usually get to Napa parks using Public Transportation.

Results of the “Where do you live and play?” question indicate that the workshops attracted residents from all over Napa and that a few parks are particularly popular with residents.

Workshop-by-workshop results of the dot exercises, workshop agenda and workshop presentation materials are included as an appendix to this report.

PRESENTATION AND LARGE GROUP DISCUSSION

After a welcome and introduction from Community Resources Director Larry Mazzuca, Ryan Mottau gave an overview presentation of the planning process, benefits of recreation, existing Napa parks resources and a series of potential park amenity additions. Following the presentation, a large group discussion focused on the general characteristics that Napa residents desire for their park system. Comments made during the large group discussion were graphically recorded for reference.

SMALL GROUP DISCUSSION

Following the large group discussion, workshop attendees broke into smaller groups to generate specific ideas and suggestions related to the Napa parks and recreation system. A series of questions were provided to the small groups to serve as a guide. City of Napa and MIG staff floated between tables,

observing and providing direction as needed. Following the close of the small group discussion, small group representatives ‘reported out’ the key discussion points raised at their tables. These comments were graphically recorded as well.

OVERALL WORKSHOP THEMES

The community workshops were well attended by Napa residents of all ages who were generally very positive about the Napa Park System and offered a variety of comments and specific input related to:

- Programs
- Park Types
- Facilities and Amenities
- Modifying and improving existing parks
- Location ideas for potential park and facility; and
- Trails and connections.

There were also strong interest and support for improved water features, skate park concepts, programs and facilities for kids, and a community center.

KEY THEMES

Based on the comments provided at all three workshops, the planning team has identified a number of key themes that surfaced repeatedly. Napa residents envision a park system that builds on what already exists and has the following qualities:

Image and sense of place

The Napa parks and recreation system should optimize Napa’s unique natural setting, superb climate and relation to Napa River to serve as the basis for a system of interconnected recreational opportunities for Napa residents of all ages. Additionally, the installation of interactive art features and sculpture was suggested.

Parks all over town

Residents are excited about connecting existing parks and recreation facilities with a network of bicycle and pedestrian friendly paths, trails and lanes. Locating neighborhood-serving parks in areas like South Napa that currently lack these features was strongly supported.

River access

The Napa River defines the City of Napa and residents desire increased formal access points to the River for recreational activities. Residents also expressed interest in the potential for increased river access points to serve as a regional attraction and economic generator.

Safety and cleanliness

While park safety was not an overriding concern, attendees did articulate a strong level of support for a park system that is safe and clean. Additional lighting throughout the park system, especially on the River Trail was requested, as well as recycling facilities.

Accessibility for all

Workshop attendees strongly supported the concept of a parks and recreation system that includes features and amenities which support recreational opportunities for residents of all ages and abilities.

Sustainability

Parks and recreation facilities provide an opportunity to showcase Napa's commitment to sustainability. Increased use of native and drought tolerant plantings, water conservation, support of community gardens and the development of resource efficient, LEED certified facilities were a few key suggestions.

Additional indoor facility space

Residents desire additional recreation facility space for evening programming, youth programming and childcare. Workshop participants strong supported the concept of a multi-use community center that serves residents of all ages and visitors in a central location.

Maintaining existing facilities

Workshop participants expressed overall support for the existing park system and support for maintaining the existing array of parks and facilities to a high degree. Furthermore, a clear sentiment was expressed to only develop additional resources that can be maintained at a high level over time.

Natural areas and habitat

Preserving Napa's unique environmental features such as riparian areas and wetlands through the development of natural areas and open space is highly valued by Napa residents. Additionally, these areas can serve as living laboratories for educational experiences and programming. Workshop attendees expressed a desire for additional interpretive signage and educational displays throughout the park system.

NEXT STEPS

The Master Plan team is reviewing specific workshop findings and will use these concepts as plan development moves forward. A telephone survey has been initiated and will be the final component of the initial public involvement process. As the planning process continues, important discussion documents will be released to the project team and the public, via www.napaparksmasterplan.org, for comment. These interim documents will include key points that will shape the draft Parks and Recreation Facilities Master Plan and community comment on these documents will help ensure that the process stays in line with the community needs and vision.

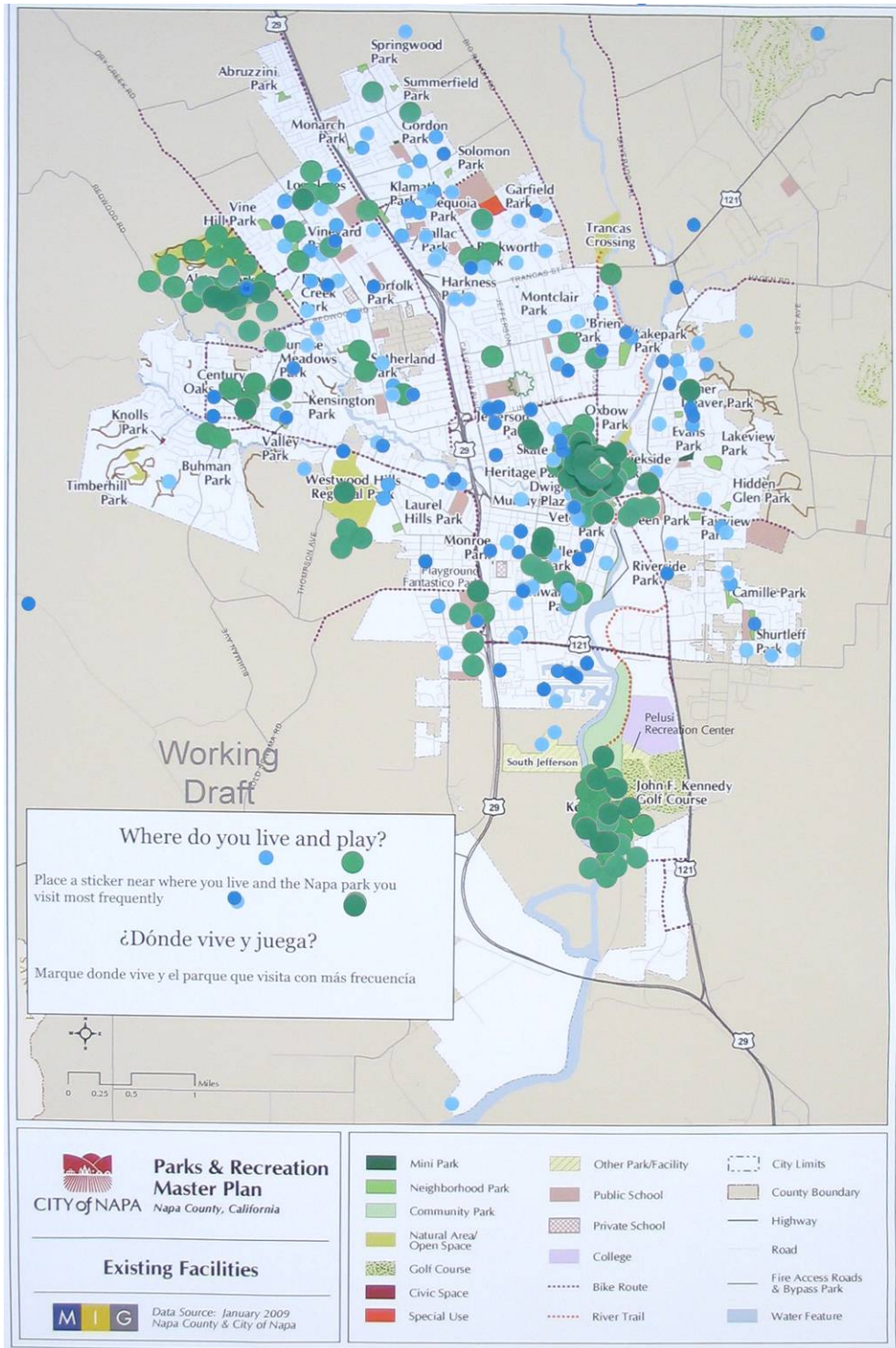
APPENDIX A: DOT EXERICSE RESULTS

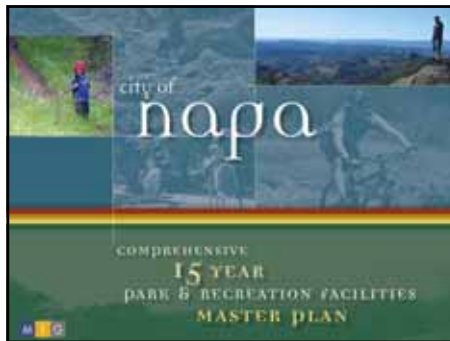
How do you use Napa Parks and Recreation Facilities?	January 22nd	January 24th	January 28th	Workshop Totals
Walking/ Hiking	20	18	23	61
Other *	20	12	20	52
Playing Competitive Sports	8	7	35	50
Visiting/Playing at the playground	10	3	11	24
Picknicking and Gathering	7	6	5	18
Water Activities	10	4	3	17
Taking a Class/ Activity	3	8	5	16
Visiting the senior center	7	6	3	16
How do you usually get to Napa Parks?	January 22nd	January 24th	January 28th	Workshop Totals
Drive	18	13	37	68
Other* *	18	2	20	40
Bike	12	11	12	35
Walk	6	8	19	33
Public Transportation	0	0	1	1

* Other park uses were primarily skateboarding and dog walking

** Other ways of getting to parks were primarily skateboarding and BMX

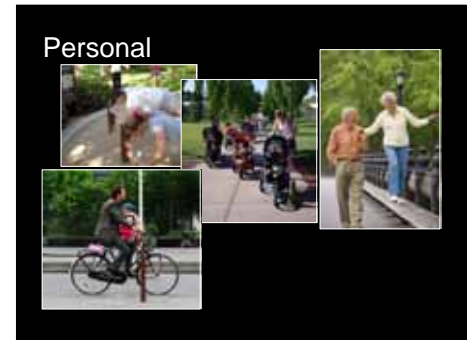
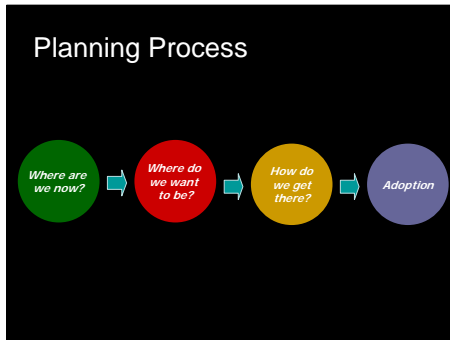
WHERE DO YOU LIVE AND PLAY?






Welcome, Bienvenidos!

- ### Workshop Purpose
- Overview of Planning Process
 - Review Existing Parks and Facilities
 - Hear from You!



Parks and Recreation in Napa



Existing Parks

- Community Parks



Existing Parks

- Neighborhood Parks



Existing Parks

- Natural Areas and Open Spaces



Existing Parks

- Mini Parks and Civic Spaces



Existing Parks

- Mini Parks and Civic Spaces



Existing Parks


- Paths and Trails



Existing Facilities



Existing Facilities



Other Facilities

- School District



How Much is Enough?



Napa compared to other cities

- Comparable for parkland
- Other cities have greater mix of facilities and amenities
- Excellent relationship with School District and sports groups

What we've heard so far

- South Napa Needs Parks
- Need more space for programming
- Dogs
- Trails and connections
- Improve playgrounds
- Facilities for youth

Imagine This...



Imagine This...

- Water Play



Imagine This...

- Water Play



Imagine This...

- Nature Play



Imagine This...

- Interactive Features




Imagine This...

- Interactive Features



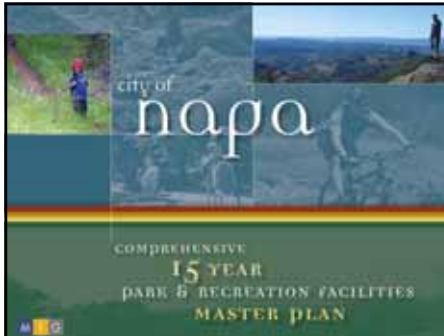
Imagine This...

- Farmer's Markets



Imagine This...

- Interpretation and Education



city of
napa

COMPREHENSIVE
15 YEAR
PARK & RECREATION FACILITIES
MASTER PLAN



CITY of NAPA

NAPA PARKS AND RECREATION FACILITIES MASTER PLAN

Community Workshop

AGENDA

10:00 I. **Welcome and Introductions**
1. Opening Remarks
2. Agenda and Meeting Purpose
Larry Mazzuca, Director, Community Resources Department
Ryan Mottau, Facilitator, MIG, Inc.

10:10 II. **Presentation: Napa Parks Today and Future Opportunities**
3. Project Overview
4. Benefits of Parks and Recreation
5. Napa's Parks and Recreation System
Ryan Mottau, MIG

10:30 III. **Large Group Discussion**
All

10:55 IV. **Small Group Exercise**
All

11:25 V. **Small Group Reports**
All

12:00 VI. **Close**



CITY of NAPA

NAPA PARKS AND RECREATION FACILITIES MASTER PLAN

Community Workshop

Large Group Discussion Questions

1. Which of the benefits of parks and recreation do you value most?
 - ✓ Personal
 - ✓ Social/ Community
 - ✓ Economic
 - ✓ Environmental
 - ✓ Other?
2. What aspects of the existing park and recreation system are working well?
3. What aspects of the existing park and recreation system can be improved?

Small Group Discussion Questions

1. What would you most like to do in parks?
 - ✓ What new facilities would you need?
 - ✓ What new program ideas?
2. What streets, intersections and other barriers make it difficult to get to park facilities?
3. How can the parks and facilities you use be improved to better provide the benefits discussed in the larger group?

Please identify general or more specific improvements that you feel should be prioritized.